



HAL
open science

Signaling through the interleukin 2 receptor beta chain activates a STAT-5-like DNA-binding activity.

S. Gaffen, S. Lai, Wei-Jiang Xu, F. Gouilleux, B. Groner, M. Goldsmith, W. Greene

► **To cite this version:**

S. Gaffen, S. Lai, Wei-Jiang Xu, F. Gouilleux, B. Groner, et al.. Signaling through the interleukin 2 receptor beta chain activates a STAT-5-like DNA-binding activity.. Proceedings of the National Academy of Sciences of the United States of America, 1995, 92 (16), pp.7192-7196. 10.1073/pnas.92.16.7192 . hal-02427574

HAL Id: hal-02427574

<https://univ-tours.hal.science/hal-02427574>

Submitted on 29 Oct 2021

HAL is a multi-disciplinary open access archive for the deposit and dissemination of scientific research documents, whether they are published or not. The documents may come from teaching and research institutions in France or abroad, or from public or private research centers.

L'archive ouverte pluridisciplinaire **HAL**, est destinée au dépôt et à la diffusion de documents scientifiques de niveau recherche, publiés ou non, émanant des établissements d'enseignement et de recherche français ou étrangers, des laboratoires publics ou privés.

Signaling through the interleukin 2 receptor β chain activates a STAT-5-like DNA-binding activity

SARAH L. GAFFEN*, STEPHEN Y. LAI*, WEIDUAN XU*, FABRICE GOUILLEUX†, BERND GRONER†, MARK A. GOLDSMITH*‡, AND WARNER C. GREENE*‡§¶

*Gladstone Institute of Virology and Immunology, Departments of ‡Medicine and §Microbiology and Immunology, School of Medicine, University of California, San Francisco, CA 94143; and †Institute for Experimental Cancer Research, Tumor Biology Center, Freiburg, Germany

Communicated by Steven L. McKnight, Tularik, South San Francisco, CA, April 12, 1995

ABSTRACT To explore the possible involvement of STAT factors (“signal transducers and activators of transcription”) in the interleukin 2 receptor (IL-2R) signaling cascade, murine HT-2 cells expressing chimeric receptors composed of the extracellular domain of the erythropoietin receptor fused to the cytoplasmic domains of the IL-2R β or $-\gamma_c$ chains were prepared. Erythropoietin or IL-2 activation of these cells resulted in rapid nuclear expression of a DNA-binding activity that reacted with select STAT response elements. Based on reactivity with specific anti-STAT antibodies, this DNA-binding activity was identified as a murine homologue of STAT-5. Induction of nuclear expression of this STAT-5-like factor was blocked by the addition of herbimycin A, a tyrosine kinase inhibitor, but not by rapamycin, an immunophilin-binding antagonist of IL-2-induced proliferation. The IL-2R β chain appeared critical for IL-2-induced activation of STAT-5, since a mutant β chain lacking all cytoplasmic tyrosine residues was incapable of inducing this DNA binding. In contrast, a γ_c mutant lacking all of its cytoplasmic tyrosine residues proved fully competent for the induction of STAT-5. Physical binding of STAT-5 to functionally important tyrosine residues within IL-2R β was supported by the finding that phosphorylated, but not nonphosphorylated, peptides corresponding to sequences spanning Y392 and Y510 of the IL-2R β tail specifically inhibited STAT-5 DNA binding.

The cytokine interleukin 2 (IL-2) plays a central role in the immune response, serving as a primary regulator of T-cell proliferation and differentiation as well as a mediator of NK- and B-cell development and differentiation (1, 2). The IL-2 receptor (IL-2R) is a multisubunit complex composed of three recognized proteins, α , β , and a common chain, γ_c , shared with the IL-4, IL-7, IL-9, and IL-15 receptors (3–6). The IL-2R β and $-\gamma_c$ chains contain cytoplasmic domains of 385 and 86 amino acids, respectively, and are sufficient to transduce signals after IL-2-mediated dimerization (7–9). In particular, the cytoplasmic domain of the IL-2R β chain is associated with the Janus-family kinase JAK1, while γ_c is found with JAK3 (10, 11). Thus, a major early signaling event produced by IL-2 binding is tyrosine phosphorylation of several substrates, including the IL-2R β and $-\gamma_c$ chains themselves as well as JAK1 and JAK3 (12–15).

Cytokine receptors and their associated JAKs have been shown to mediate tyrosine phosphorylation and concomitant activation of STAT factors (“signal transducers and activators of transcription”) (reviewed in ref. 16), which are found in a latent, unphosphorylated state in the cytoplasm (17, 18). Upon receptor stimulation, they likely physically associate with the activated receptor tail through their SH2 domains (19, 20), become phosphorylated, dissociate from the receptor, and then dimerize via these SH2 domains (21). Dimerization is

thought to allow nuclear import, where the STAT factors subsequently regulate transcription of target genes. At least four STAT response elements are the targets of a rapidly induced DNA-binding activity after IL-2R stimulation (22–26). Thus, to study the role of STAT factors in IL-2 signaling, we made use of an IL-2R signaling system in the IL-2-dependent, CD4⁺ murine T-cell line HT-2. In this system, chimeric receptors containing the extracellular domain of the erythropoietin (EPO) receptor fused to the transmembrane and cytoplasmic domains of the IL-2R β and $-\gamma_c$ chains (EPO β and EPO γ) are stably expressed in HT-2 cells. Heterodimerization of EPO β /EPO γ results in proliferation and induced phosphorylation of the IL-2R and JAK1 and JAK3 (M.A.G., S.Y.L., W.X., and W.C.G., unpublished data). With this system, mutations in the β and γ_c receptors can be readily introduced into the cellular context of the IL-2-dependent HT-2 cells and their functional consequences assessed.

The present studies demonstrate that IL-2R ligation in HT-2 cells induces binding of a STAT-5-like factor to specific STAT response elements. STAT-5 induction is strictly dependent on the IL-2R β chain; however, its induction appears to be insufficient to trigger proliferation signaling.

MATERIALS AND METHODS

Cell Culture, Preparation of Cell Lines, and Cytokine Stimulations. HT-2 transfectant cell lines were prepared as will be reported elsewhere. HT-2 cells were cultured in RPMI 1640 medium, 10% fetal bovine serum (FBS) (GIBCO/BRL), 2 mM glutamine, 0.05 mM 2-mercaptoethanol, and 1 nM recombinant IL-2 (rIL-2) (Chiron). HT-2EPO $\beta\gamma$, HT-2EPO β/γ YF, HT-2EPO $\beta\Delta A/\gamma$, and HT-2EPO $\beta\Delta AB/\gamma$ cells were grown in this medium with 5 units of EPO per ml (Amgen) in place of IL-2. HT-2EPO β YF/ γ stable transfectants were obtained by selection in hygromycin B (Boehringer Mannheim) and clones were selected by limiting dilution. HeLa cells were grown in Dulbecco’s modified Eagle medium with 10% FBS. For cytokine stimulations, cells were washed twice in phosphate-buffered saline (PBS), stripped by a 30-sec incubation in 10 mM sodium citrate and 140 mM NaCl, and incubated for 4 hr in serum- and growth factor-free RPMI 1640 medium containing 1% bovine serum albumin (fraction V, Sigma). Stimulations were for various periods of time (typically 15 min) with 10 ng of interferon γ per ml (IFN- γ ; PharMingen), 10 nM IL-2, or 50 units of EPO per ml in serum- and growth factor-free media. Herbimycin A (HA; BRL) and rapamycin (Calbiochem) were added 4 hr prior to and maintained during cytokine stimulations.

Abbreviations: IL, interleukin; R, receptor; EMSA, electrophoretic mobility shift assay; HA, herbimycin A; PRL, prolactin; STAT, signal transducer and activator of transcription; EPO, erythropoietin; IFN, interferon; JAK, Janus kinase; FBS, fetal bovine serum; r, recombinant.

¶To whom reprint requests should be addressed.

The publication costs of this article were defrayed in part by page charge payment. This article must therefore be hereby marked “advertisement” in accordance with 18 U.S.C. §1734 solely to indicate this fact.

Nuclear Extracts. Ten to 50 million cells were stimulated as described above and washed in PBS. Nuclear extracts were prepared as described (27) in the presence of 1 mM sodium orthovanadate and the following protease inhibitors: antipain, 0.5 mg/ml; aprotinin, 0.5 mg/ml; bestatin, 0.75 mg/ml; leupeptin, 0.5 mg/ml; pepstatin A, 0.05 mg/ml; phosphoramidon, 1.4 mg/ml; and soybean trypsin inhibitor, 0.5 mg/ml (Sigma).

Electrophoretic Mobility Shift Assay (EMSA). Oligonucleotide probes were end-labeled with [γ - 32 P]dATP (Amersham) and polynucleotide kinase (New England Biolabs), and binding assays were performed with 10^5 cpm of probe, 2 μ g of poly[d(I-C)], and 10 μ g of nuclear extract as described (28). Preincubations of nuclear extracts with different antibodies were performed in the absence of poly[d(I-C)] and binding buffer for 45 min on ice prior to initiation of the binding assay by addition of radiolabeled probe. Preincubations with peptides were performed for 45 min at 25°C with all binding reagents except probe. STAT-1 and STAT-5 C-terminal antibodies were obtained from Transduction Laboratories (Lexington, KY); STAT-2, -3, and -6 antibodies were from Santa Cruz Biotechnology (Santa Cruz, CA); 4G10 and anti-Shc (poly-IgG control) were from Upstate Biotechnology (Lake Placid, NY); MOPC 195 (IgG2b control) and UPC10 (ascites control) were from Cappel; and phosphoserine and phosphothreonine antibodies were from Sigma. Phosphopeptides were synthesized by C. Turck (University of California, San Francisco) and solubilized in PBS at a final pH of 7–8.

Preparation of STAT-5 N-Terminal Antisera. Anti-STAT-5 was produced in chickens against a glutathione *S*-transferase (GST)–STAT-5 fusion protein containing an N-terminal fragment spanning residues 6–160 (29). Antibodies from yolk egg extracts were precipitated and purified with polyethylene glycol and resuspended in 10 mM phosphate buffer, pH 7.5/100 mM NaCl/0.01% sodium azide as described (30).

RESULTS

Identification of IL-2-Inducible DNA-Binding Complexes in HT-2EPO β Cells. To identify an IL-2-inducible DNA-binding activity in wild-type HT-2 and HT-2EPO β cells, cells maintained in IL-2 or EPO were cultured in the absence of these factors for 4 hr and then stimulated for 15 min with saturating quantities of IL-2 (10 nM) or EPO (50 units/ml). Nuclear extracts were prepared and EMSAs were performed with 32 P-radiolabeled oligonucleotides (19–30 bp in length) corresponding to STAT-responsive elements found in the promoters of Fc γ R1, IRF-1, Ly6E, and SIE (16, 22, 24, 25, 31, 32). These probes revealed a specific pattern of IL-2-inducible DNA-binding activity. Specific binding to the Fc γ R1 element was observed in wild-type HT-2 cells induced with IL-2 as well as in HT-2EPO β cells induced with EPO (Fig. 1). This DNA binding activity was not detected in HT-2 cells expressing EPO β or EPO γ alone (data not shown), and allowed to react with both the Fc γ R1 and the IRF-1 probes, since the addition of a 100-fold molar excess of either unlabeled oligonucleotide as a competitor blocked binding to either probe (lanes 5 and 6). In contrast, oligonucleotides containing two other STAT-responsive elements, Ly6E and SIE, previously shown to bind IL-2-induced nuclear factors in other cell types (22, 25), did not significantly compete for binding (lanes 7 and 8). An additional, faster migrating DNA-binding complex was variably observed that was not reproducibly competitively inhibited by any of the unlabeled competitor oligonucleotides (Fig. 1 and data not shown) and thus appeared to reflect an extract-dependent, nonspecific protein–DNA interaction.

Characterization of IL-2-Binding Activity. To assess the role of tyrosine phosphorylation in the IL-2 induction of the observed DNA-binding activity, HT-2EPO β cells were stimulated with EPO in the presence of a protein tyrosine kinase inhibitor, HA, which was added 4 hr prior to EPO stimulation

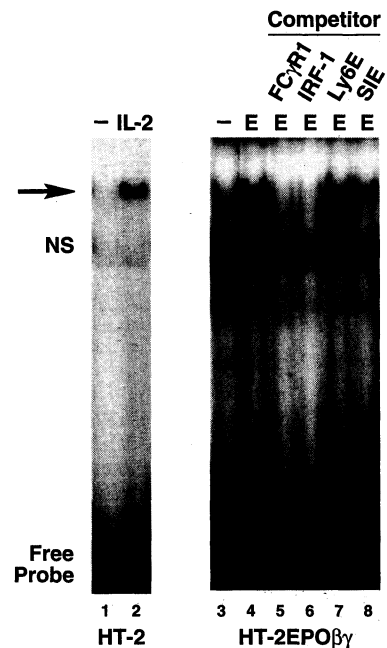


FIG. 1. IL-2-induced DNA-binding activity is selective for specific STAT response elements. HT-2EPO β cells were incubated in medium alone and stimulated for 15 min with 10 nM IL-2 (lane 2) or 50 units of EPO (E) per ml (lane 4), and nuclear extracts were prepared. The specific probe employed was 32 P-end-labeled Fc γ R1. Binding assays and EMSAs were performed in the presence or absence of 50 ng of unlabeled competitor oligonucleotides (lanes 5–8). Sequences of oligonucleotides: Fc γ R1, GTATTTCCCAGAAAAGGAC; IRF-1, GCCTGATTTCCCCGAAATGACGG; Ly6E, GATCATATTCCT-GTAAGTG; SIE, GTGCATGGTTCAGCCATCTTGTCTA-CAATTC. Arrow, inducible band; NS, nonspecific band.

(Fig. 2A). The presence of HA completely blocked the induction of this DNA-binding activity (lane 2), whereas equivalent concentrations of dimethyl sulfoxide used to dissolve the HA had no effect on its induction (lane 2). In contrast to HA, treatment of HT-2EPO β cells with the IL-2 signaling antagonist rapamycin, at a concentration known to inhibit T-cell proliferation (refs. 33 and 34 and data not shown), did not impair the activation of this DNA-binding activity (lane 4).

To examine further the requirements for tyrosine phosphorylation, nuclear extracts were incubated with monoclonal antibodies specific for phosphotyrosine for 45 min prior to EMSA. As shown in Fig. 2B (lane 4), the addition of 4G10 anti-phosphotyrosine antibody almost completely abrogated DNA-binding activity. In contrast, addition of anti-phosphoserine or anti-phosphothreonine antibodies had no effect on DNA binding (lanes 6 and 7). The critical involvement of phosphotyrosine residues in DNA-binding competence is another characteristic feature of STAT factors.

The kinetics of induction of this DNA-binding activity were next examined. Maximal activity was observed within 15 min of EPO stimulation of the HT-2EPO β cells, while a 70% decline in total binding occurred over the ensuing 4 hr (Fig. 2C, lanes 2–5). These activation kinetics are similar to those observed with many other STAT factors, in which binding to the target promoter sequences occurs quickly and decays over time (31, 35).

Identification of the IL-2-Induced DNA-Binding Activity as a Murine STAT-5 Homologue. Studies were next performed to assess whether the detected IL-2-induced DNA-binding activity could be attributed to any of the six, currently identified members of the STAT family. It has been previously demonstrated that HT-2 cells do not express STAT-4 (36). To screen the remainder of the STAT proteins, nuclear extracts from EPO-stimulated HT-2EPO β cells were incubated with

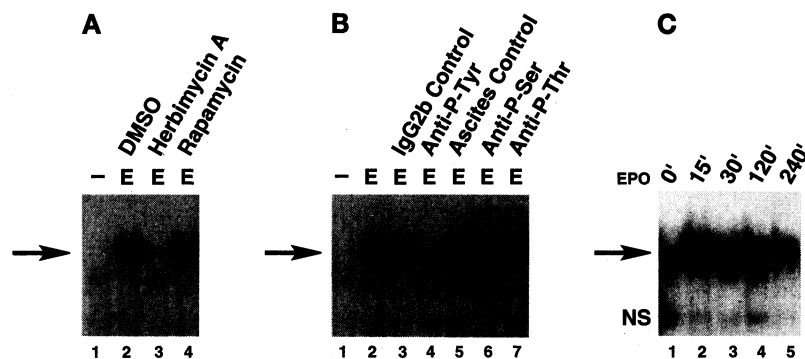


FIG. 2. IL-2 receptor-induced DNA-binding activity shares characteristics of a STAT factor. (A) HT-2EPO $\beta\gamma$ cells were stimulated with EPO (E) and nuclear extracts were prepared as detailed in the legend to Fig. 1 after a prior 4-hr incubation in 0.5% dimethyl sulfoxide (DMSO), HA (0.5 $\mu\text{g}/\text{ml}$), or rapamycin (2 ng/ml). HA and rapamycin were dissolved in DMSO to a final concentration of 0.5%. (B) HT-2EPO $\beta\gamma$ cells were stimulated with EPO and nuclear extracts were prepared (see legend to Fig. 1). Nuclear extracts were incubated with 3 μg of MOPC 195 IgG2b control, 3 μg of 4G10 anti-phosphotyrosine, 5 μg of UPC10 ascites control, 5 μg of anti-phosphoserine, or 5 μg anti-phosphothreonine antibodies for 45 min at 4°C prior to EMSA. (C) Time course of IL-2R-induced STAT expression. HT-2EPO $\beta\gamma$ cells were stimulated with EPO for the indicated times and nuclear extracts were prepared (see legend to Fig. 1). Arrows and NS are as in Fig. 1.

STAT-specific antibodies prior to EMSA. Fig. 3 shows that the EPO-induced complex was neither competitively inhibited nor supershifted by preincubation with antibodies to STAT-1, -2, -3, and -6 (lanes 3–8) or ISGF3 γ (p48) (data not shown). However, antibodies specific for an N-terminal fragment of sheep STAT-5 resulted in a new DNA protein complex with a slower mobility in IL-2-induced HT-2EPO $\beta\gamma$ cells (lanes 12 and 13) but had no effect on IFN γ -induced STAT-1 in HeLa cells (data not shown). Notably, the original DNA-binding complex was not completely shifted by addition of anti-STAT-5 antibodies, suggesting that there may be a second protein involved in the complex that is antigenically distinct

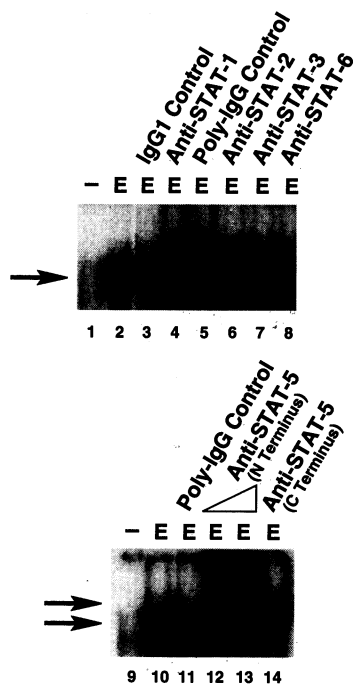


FIG. 3. The IL-2-induced DNA-binding complex is a STAT-5-like protein. HT-2EPO $\beta\gamma$ cells were stimulated with EPO (E) for 15 min and nuclear extracts prepared (see legend to Fig. 1). Nuclear extracts were incubated with 2 μg of LFA-1 β IgG1 control, 2 μg of anti-human STAT-1, 3 μg of anti-human Shc poly-IgG control, 3 μg of anti-human STAT-2, 3 μg of anti-mouse STAT-3, 3 μg of anti-human STAT-6, 1 μl (lane 12) or 2 μl (lane 13) of anti-sheep STAT-5 (N terminus), or 2 μg of anti-sheep STAT-5 (C terminus) as detailed in the legend to Fig. 2B. Arrows, specific, cytokine-inducible band (Lower) and super-shifted band (Upper).

from the known STAT factors. Interestingly, antibodies raised against a C-terminal protein fragment of sheep STAT-5 had no effect on the DNA-binding complex (lane 14). This finding raises the possibility that this factor may be a distinct protein that shares STAT-5 homology at its N terminus. Thus, the DNA-binding activity induced in HT-2EPO $\beta\gamma$ cells appears to correspond to a murine STAT-5-like protein.

STAT-5 Induction Is Mediated Through the IL-2R β Chain.

The HT-2 EPO $\beta\gamma$ chimera system allows testing of β and γ_c mutants in the context of endogenous, wild-type β and γ_c chains. To determine whether the tyrosine residues within the γ_c subunit play a role in the induction of the STAT-5-like activity, nuclear extracts were prepared from HT-2EPO $\beta\gamma$ /YF cells, a cell line in which all four of the cytoplasmic tyrosines within EPO γ had been substituted with phenylalanine residues (M.A.G., *et al.*, unpublished data). As shown in Fig. 4A, these cells remained fully capable of inducing STAT-5 in response to EPO (lane 4).

To determine whether the tyrosine residues of the IL-2R β chain were necessary for STAT-5 induction, a chimeric EPO β fusion gene in which all cytoplasmic tyrosine residues of β were replaced with phenylalanine (M.A.G., *et al.*, unpublished data) was introduced into HT-2 cells stably expressing the EPO γ construct (HT-2EPO β YF/ γ). Transgene expression was confirmed by RNA Northern analysis (data not shown). In marked contrast to cells expressing the YF mutation, six independently derived HT-2EPO β YF/ γ cell lines were incapable of activating STAT-5 DNA-binding activity in response to EPO (two representative transfectants are shown, Fig. 4B, Upper). As a control for the integrity of the nuclear extracts, DNA-binding activity to the ubiquitous transcription factor SP-1 was assessed and found to be equivalent in all extracts (Fig. 4B, Lower). This result provided strong evidence that the IL-2R β chain was critical for induction of the STAT-5-like factor.

To localize further the region within the IL-2R β chain involved in STAT-5 activation, nuclear extracts were prepared from cells expressing EPO γ and either of two deletion mutants in the β chain, EPO $\beta\Delta A$ and EPO $\beta\Delta AB$ (38). Both of these mutant β chains were competent to induce STAT-5 fully (Fig. 4A), indicating that sequences in the A and B regions of the IL-2R β subunit are unnecessary for STAT-5 induction, thus implicating the most distal tyrosine (Y510) in inducible STAT-5 DNA binding.

STAT-5 DNA Binding Is Inhibited by Phosphotyrosine-Containing Peptides from the IL-2R β Chain. In previously described cytokine-induced STAT activation systems, direct association of the cytokine receptor with its cognate STAT factor through SH2-phosphotyrosyl interactions has been pro-

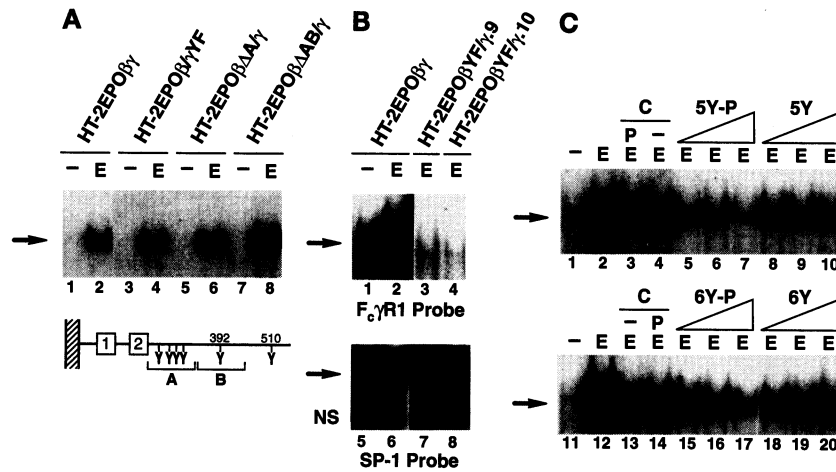


FIG. 4. STAT-5 induction is mediated through the IL-2R β chain. (A) STAT-5 induction is independent of γ_c tyrosine residues and the IL-2R β AB region. Indicated cell lines were stimulated with EPO (E), nuclear extracts were prepared, and EMSAs were performed as described in the legend to Fig. 1. The IL-2R β chain transmembrane and cytoplasmic regions are represented. Conserved box 1 and box 2 regions (37), tyrosine residues (Y), and A and B regions are indicated. (B) Tyrosine residues of the IL-2R β chain are required for STAT-5 induction. Indicated cell lines were stimulated with EPO and nuclear extracts were prepared. EMSA was performed with the Fc γ R1 or SP-1 probe (TCGAGAGGTGGGTG-GAGTTTCGCG), as indicated. (C) Certain tyrosine-phosphopeptides derived from the IL-2R β cytoplasmic tail inhibit STAT-5 DNA binding. HT-2EPO $\beta\gamma$ cells were stimulated with EPO and nuclear extracts were prepared. Nuclear extracts were incubated with phosphorylated (P) or unphosphorylated (-) peptides at concentrations of 680 μ M (lanes 3, 4, 7, 10, 13, 14, 17, and 20), 425 μ M (lanes 6, 9, 16, and 19), or 250 μ M (lanes 5, 8, 15, and 18). Peptide sequences: C, TPSLLEYDQNAL; 5Y, SGEDDAYCTFPS; 6Y, PLNTDAYLSLQE. Arrows, specific, cytokine-induced bands. NS, nonspecific band.

posed (32, 39). Together, the HT-2EPO $\beta\Delta$ AB/ γ and HT-2EPO β YF/ γ mutants suggested that Y510 was critical for STAT-5 induction. However, previous studies of receptor mutants have implicated a redundant function for Y392 and Y510 in proliferation signaling in the Ba/F3 cell line (M.A.G., *et al.*, unpublished data). Further, Y392 has been clearly shown to be phosphorylated *in vivo* (M.A.G., *et al.*, unpublished data). Therefore, to delineate the potential role of phosphorylated tyrosine residues within the IL-2R β tail in STAT-5 activation, synthetic phosphopeptides corresponding to these receptor sites and their nonphosphorylated counterparts were added to EMSA reactions. A peptide corresponding to a random rearrangement of the amino acids surrounding IL-2R β Y510 was employed as a control (C). Peptides derived from the IL-2R β Y392 and Y510 were designated 5Y and 6Y, respectively. Fig. 4C shows that neither the control peptides nor nonphosphorylated 5Y and 6Y peptides affected STAT-5 DNA binding. However, addition of the phosphorylated 5Y and 6Y peptides markedly inhibited DNA binding in a dose-dependent fashion (lanes 5–7 and 15–17). Since the amino acid sequences surrounding these tyrosines are similar (*Discussion*), it is not unexpected that both sequences when phosphorylated can form binding motifs recognized by STAT-5. These data suggest that STAT-5 activation likely involves physical assembly at Y392 and/or Y510 of the IL-2R β chain, further supporting a central role for IL-2R β in the activation of STAT-5.

DISCUSSION

The present studies identify an IL-2-inducible DNA-binding activity in murine T cells that exhibits activation kinetics and tyrosine phosphorylation dependence characteristic of a STAT factor. These observations are fully consistent with its identification as a murine homologue of STAT-5, based on reactivity with anti-sheep STAT-5 antibodies.

STAT-5 was originally identified as a prolactin (PRL)-induced DNA-binding activity present in sheep and murine mammary epithelial cells (29, 40, 41). PRL and IL-2 induce a STAT-like DNA-binding activity in rat Nb2 cells (24), and it has been suggested that nuclear PRL may be required for IL-2-induced proliferation in this cell line (42). The fact that

the IL-2 and PRL receptors utilize a common or closely related STAT factor raises the intriguing notion of convergent signaling through these disparate receptors in specific cell types.

The pattern of STAT activation by IL-2 varies considerably, depending upon the specific cellular environment and STAT response element tested. For example, in HT-2 cells, IL-2 induces STAT-5 binding to some (Fc γ R1 and IRF-1), but not all (Ly6E and SIE), STAT response sequences (Fig. 1). Similarly, in human T cells and NK cells, IL-2 induces STAT-5 binding to the Fc γ R1 element (32). In human lymphocytes, IL-2 also induces STAT-1 binding with the Fc γ R1 site (22, 32), while constitutive binding of STAT-3 is observed with this element (32). Using the Ly6E and SIE elements as probes, STAT-1-binding activity has been detected in human T cells and promonocytes (22, 25) but is lacking in HT-2 cells. We conclude that multiple STAT factors may be involved in IL-2 signaling and that different patterns of STAT factor induction may occur in different cellular environments.

The emerging picture of STAT factor activation suggests a direct physical association of the factor with its inducing receptor mediated through the same SH2-phosphotyrosyl interactions that subsequently allow for its dimerization and nuclear import (21, 32, 39). This model was strengthened by the finding that tyrosine-phosphorylated peptides derived from the IL-4R block STAT-6 binding to DNA, presumably by preventing its dimerization (32). We now describe studies in the IL-2R system that are consistent with this paradigm. Notably, our studies indicate that the IL-2R β chain, and not γ_c , is principally responsible for STAT-5 induction. Indeed, a γ_c mutant chain lacking all four cytoplasmic tyrosine residues continued to promote normal STAT-5 induction when paired with IL-2R β (Fig. 4A). In contrast, an IL-2R β mutant receptor lacking all cytoplasmic tyrosines failed to induce STAT-5 activity (Fig. 4). Further evidence indicating that STAT-5 activation is mediated exclusively through the β chain was obtained in studies of a hybrid receptor containing wild-type EPOR and EPO β chains without γ_c ; this hybrid complex, but not the EPOR homodimer, induced STAT-5 identically to the HT-2EPO $\beta\gamma$ cells. Data supporting the direct physical assembly of STAT-5 with the IL-2R β chain were obtained in the present peptide competition experiments in which phosphor-

ylated, but not nonphosphorylated, peptides spanning either Y392 or Y510 of IL-2R β specifically blocked STAT-5 DNA binding (Fig. 4C). The ability of the EPO β Δ AB mutant receptor (which lacks Y392 and four proximal cytoplasmic tyrosines) to induce STAT-5 compared to the inability of the EPO β YF (lacking all six tyrosines) to induce STAT-5 suggests that there may be functional redundancy of these two tyrosine residues. Such a functional redundancy in Y392 and Y510 has also been found for growth signaling in pro-B cells. In addition, Y392 has been documented as a site for IL-2-induced phosphorylation *in vivo* (M.A.G., *et al.*, unpublished data). Together, these observations strongly suggest that the specificity of IL-2-induced activation of STAT-5 lies in the IL-2R β cytoplasmic domain and that specific phosphotyrosines within this chain mediate binding of STAT-5 to the receptor.

Recent studies have led to the identification of a tyrosine-containing motif within the gp130-containing family of cytokine receptors that regulates the specificity of STAT factor binding (20). In a parallel fashion, we note that the sequences surrounding Y392 and Y510 of the IL-2R β share certain similarities with each other as well as with sequences present in other select cytokine receptors such as the EPO, IL-3, IL-4, and growth hormone receptors. This general sequence, DAYXS/TLX/P, may represent a second motif for cytokine receptor-STAT association. Consistent with this model, the EPO and growth hormone receptors have been shown to induce STAT-5 (unpublished data; ref. 43). However, the tyrosine-containing regions within the PRLR fail to conform to the proposed IL-2R β motif, yet STAT-5 is induced through this receptor. Thus, more than one STAT-5 motif may exist, or different STAT-5 isoforms may display different receptor specificities. With sufficient knowledge of the range of such motifs, it may be possible to predict on the basis of a receptor's primary sequence and state of phosphorylation *in vivo* which STAT factors will be induced following receptor ligation.

In conclusion, the role of STAT-5 in signal transduction through the IL-2R as described in this work adds to the rapidly expanding picture of STAT factor diversity in cytokine receptor signaling and reinforces the importance of the JAK-STAT pathway in IL-2R signaling. At present, the precise targets of STAT-5 action remain unknown. Further understanding of the range of STAT factors induced and the identity of the cellular genes that they regulate will help dissect at a molecular level the underlying basis for IL-2 signaling.

We thank Dr. S. McKnight for generously sharing unpublished data, Dr. C. Turck for peptide synthesis, Dr. D. Pearce for helpful discussions, and Chiron Corp. for providing rIL-2. We acknowledge the excellent assistance of Mr. John Carroll and Mr. Mark Dettle in the preparation of this manuscript. Support for this work was provided by the J. David Gladstone Institutes. S.Y.L. is in the National Institutes of Health Medical Scientist Training Program at the University of California, San Francisco.

- Goldsmith, M. A. & Greene, W. C. (1994) in *The Cytokine Handbook*, ed. Thomson, A. (Paston, Norfolk, England), pp. 57–80.
- Smith, K. A. (1992) *Curr. Opin. Immunol.* **4**, 271–276.
- Noguchi, M., Nakamura, Y., Russel, S. M., Ziegler, S. F., Tsang, M., Cao, X. & Leonard, W. J. (1993) *Science* **262**, 1877–1880.
- Russell, S. M., Keegan, A. D., Harada, N., Nakamura, Y., Noguchi, M., Leland, P., Friedman, M. C., Miyajima, A., Puri, R. K., Paul, W. E. & Leonard, W. J. (1993) *Science* **262**, 1880–1883.
- Kondo, M., Takeshita, T., Ishii, N., Nakamura, M., Watanabe, S., Arai, K.-i. & Sugamura, K. (1993) *Science* **262**, 1874–1877.
- Grabstein, K. H., Eisenman, J., Shanebeck, K., Rauch, C., Srinivasan, S., Fung, V., Beers, C., Richardson, J., Schoenborn, M. A., Ahdieh, M., Johnson, L., Alderson, M. R., Watson, J. D., Anderson, D. M. & Giri, J. G. (1994) *Science* **264**, 965–968.
- Nelson, B. H., Lord, J. D. & Greenberg, P. D. (1994) *Nature (London)* **369**, 333–336.
- Nakamura, Y., Russell, S. M., Mess, S. A., Friedmann, M., Erdos, M., Francois, C., Jacques, Y., Adelman, S. & Leonard, W. J. (1994) *Nature (London)* **369**, 330–333.
- Taniguchi, T. & Minami, Y. (1993) *Cell* **73**, 5–8.
- Russell, S. M., Johnston, J. A., Noguchi, M., Kawamura, M., Bacon, C. M., Friedmann, M., Berg, M., McVicar, D. W., Witthuhn, B. A., Silvennoinen, O., Goldman, A. S., Schmalsteig, F. C., Ihle, J. N., O'Shea, J. J. & Leonard, W. J. (1994) *Science* **266**, 1042–1045.
- Miyazaki, T., Kawahara, A., Fujii, H., Nakagawa, Y., Minami, Y., Liu, Z.-J., Oishi, I., Silvennoinen, O., Witthuhn, B. A., Ihle, J. N. & Taniguchi, T. (1994) *Science* **266**, 1045–1047.
- Johnston, J. A., Kawamura, M., Kirken, R. A., Chen, Y.-Q., Blake, T. B., Shibuya, K., Ortaldo, J. R., McVicar, D. W. & O'Shea, J. J. (1994) *Nature (London)* **370**, 151–153.
- Witthuhn, B. A., Silvennoinen, O., Miura, O., Lai, K. S., Cwik, C., Liu, E. T. & Ihle, J. N. (1994) *Nature (London)* **370**, 153–157.
- Asao, H., Takeshita, T., Nakamura, M., Nagata, K. & Sugamura, K. (1990) *J. Exp. Med.* **171**, 637–644.
- Sugamura, K., Takeshita, T., Asao, H., Kumaki, S., Ohbo, K., Ohtani, K. & Nakamura, M. (1990) *Lymphokine Res.* **9**, 539–543.
- Darnell, J. E., Kerr, I. M. & Stark, G. R. (1994) *Science* **264**, 1415–1421.
- Schindler, C., Shuai, K., Prezioso, V. R. & Darnell, J. E. (1992) *Science* **257**, 809–815.
- Shuai, K., Stark, G. R., Kerr, I. M. & Darnell, J. E. (1993) *Science* **261**, 1744–1746.
- Heim, M. H., Kerr, I. M., Stark, G. R. & Darnell, J. E. (1995) *Science* **267**, 1347–1349.
- Stahl, N., Farruggella, T. J., Boulton, T. G., Zhong, Z., Darnell, J. E. & Yancopoulos, G. D. (1995) *Science* **267**, 1349–1353.
- Shuai, K., Horvath, C. M., Huang, L. H. T., Qureshi, S. A., Cowburn, D. & Darnell, J. E. (1994) *Cell* **76**, 821–828.
- Beadling, C., Gischin, D., Witthuhn, B. A., Ziemiecki, A., Ihle, J. N., Kerr, I. M. & Cantrell, D. A. (1994) *EMBO J.* **13**, 5605–5615.
- Finbloom, D. S., Petricoin, E. F., Hackett, R. H., David, M., Feldman, G. M., Igarashi, K.-i., Fibach, E., Weber, M. J., Thorner, M. O., Silva, C. M. & Larner, A. C. (1994) *Mol. Cell. Biol.* **14**, 2113–2118.
- Gilmour, K. C. & Reich, N. C. (1994) *Proc. Natl. Acad. Sci. USA* **91**, 6850–6854.
- Lamb, P., Kessler, L. V., Suto, C., Levy, D. E., Seidel, H. M., Stein, R. B. & Rosen, J. (1994) *Blood* **83**, 2063–2071.
- Hou, J., Schindler, U., Henzel, W. J., Wong, S. C. & McKnight, S. L. (1995) *Immunity* **2**, 321–329.
- Schreiber, E., Matthias, P., Muller, M. M. & Schaffner, W. (1989) *Nucleic Acids Res.* **17**, 6419–6420.
- Latchman, D. S. (1993) *Transcription Factors: A Practical Approach* (IRL, New York).
- Wakao, H., Gouilleux, F. & Groner, B. (1994) *EMBO J.* **13**, 2182–2191.
- Carroll, S. B. & Stollar, B. D. (1983) *J. Biol. Chem.* **258**, 24–26.
- Kotanides, H. & Reich, N. C. (1993) *Science* **262**, 1265–1267.
- Hou, J., Schindler, U., Henzel, W. J., Ho, T. C., Brasseur, M. & McKnight, S. L. (1994) *Science* **265**, 1701–1706.
- Dumont, F. J., Staruch, M. J., Koprak, S. L., Melino, M. R. & Sigal, N. H. (1990) *J. Immunol.* **144**, 251–258.
- Juo, C. J., Chung, J., Florentino, D. F., Flanagan, W. M., Blenis, J. & Crabtree, G. R. (1992) *Nature (London)* **358**, 70–73.
- Schindler, C., Kashleva, H., Pernis, A., Pine, R. & Rothman, P. (1994) *EMBO J.* **13**, 1350–1356.
- Zhong, Z., Wen, Z. & Darnell, J. E. (1994) *Proc. Natl. Acad. Sci. USA* **91**, 4806–4810.
- Murakami, M., Narazaki, M., Hibi, M., Yawata, H., Yasukawa, K., Hamaguchi, M., Taga, T. & Kishimoto, T. (1991) *Proc. Natl. Acad. Sci. USA* **88**, 11349–11353.
- Goldsmith, M. A., Xu, W., Amaral, M. C., Kuczek, E. S. & Greene, W. C. (1994) *J. Biol. Chem.* **269**, 14698–14704.
- Greenlund, A. C., Farrar, M. A., Viviano, B. L. & Schreiber, R. D. (1994) *EMBO J.* **13**, 1591–1600.
- Gouilleux, F., Wakao, H., Mundt, M. & Groner, B. (1994) *EMBO J.* **13**, 4361–4369.
- Welte, T., Garimorth, K., Philipp, S. & Doppler, W. (1994) *Mol. Endocrinol.* **8**, 1091–1102.
- Clevenger, C. V., Altmann, S. W. & Prystowsky, M. (1991) *Science* **253**, 77–79.
- Gouilleux, F., Pallard, C., Dusanter-Fourt, I., Wakao, H., Haldosen, L.-A., Norstedt, G., Levy, D. & Groner, B. (1995) *EMBO J.* **14**, 2005–2013.